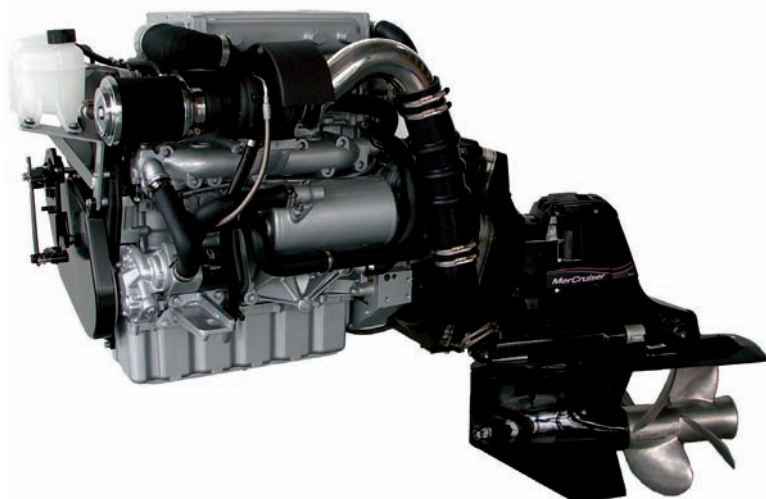




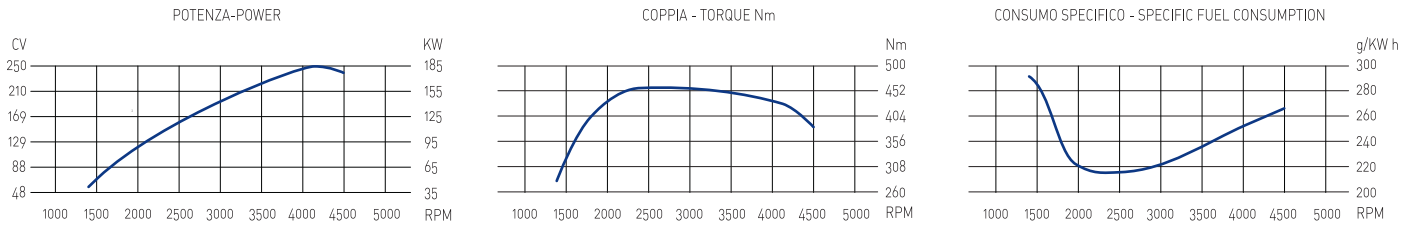
MARINE DIESEL ENGINES



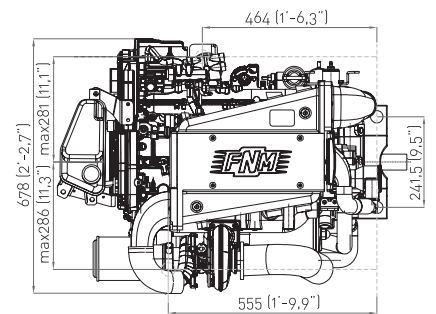
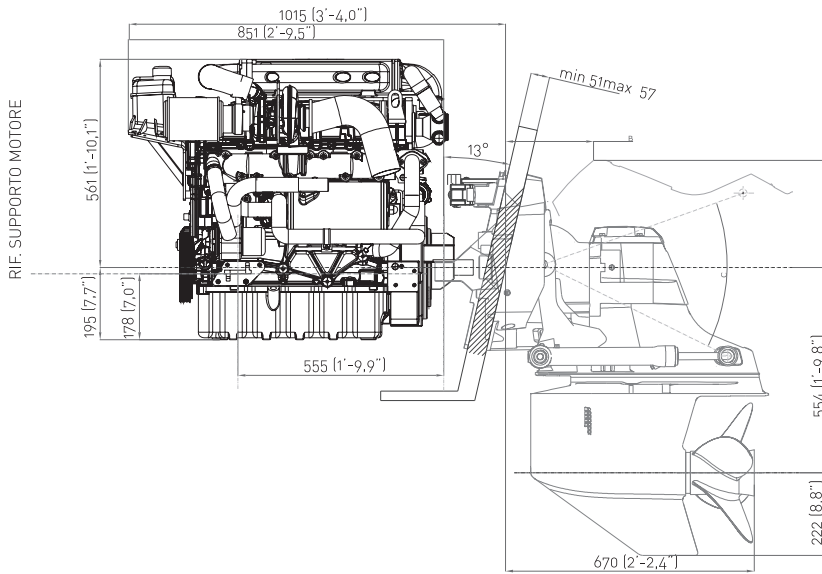
FNM HPEP 250

| | |
|--------------------------------|---|
| Configuration | 4-stroke cycle, twin camshaft, 20 V |
| Maximum output at crankshaft | 184 kW/250 hp at 4200 rpm |
| Maximum output at propeller | 177 kW/241 hp at 4200 rpm |
| Maximum torque | 460 Nm a 2600 giri/min. |
| Displacement | 2.387 c.c. |
| Bore x stroke | 82 x 90,4 mm |
| Cylinders | 5, in-line |
| Combustion system | Direct injection Common Rail |
| Aspiration | Supercharged with variable geometry turbine |
| Starting system | Electric starting 12 V – 2,1 kW |
| Alternator | 12 V – 105 A |
| Cooling system | Double water cooling system with heat exchanger |
| Lubrication system | Totally enclosed, forced lubricating system with pump |
| Max. mounting inclination | 14° |
| Dry weight without stern drive | 290 kg |
| Environmental | RCD 2003/44/CE ed EPA TIER 2 |
| Engine mounting | Rubber type anti-vibration mounting |

Power according ISO 8665, tolerance 5%, Diesel fuel according EN 590



please refer to our website www.fnm-marine.com or contact your supplier

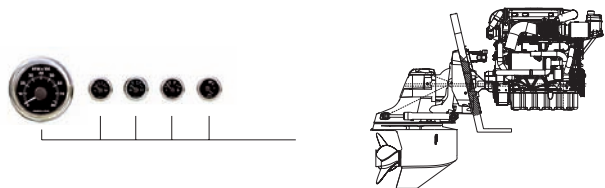


EXHAUST RISER DIAMETER 80mm
 FUEL LINE INLET DIAMETER 8mm
 SEA WATER LINE INLET DIAMETER 32mm

FNM HPEP 250 w/ Bravo X-1 stern drive

| DISTANZIAT. | A | B | C |
|-------------|--------------|--------------|-----|
| 0 | 289 [11.37"] | 264 [10.39"] | 51° |
| 1 | 274 [10.78"] | 286 [11.26"] | 46° |
| 2 | 258 [10.15"] | 305 [12.00"] | 41° |

Available also with Bravo Two and Bravo Three stern drives



Compliant with the RCD 2003/44/CE and EPA TIER 2 emission standards.